



Students Impacted **161,138**

Annual Report

Minnesota Agriculture in the Classroom



2021-22



AgMag
Agriculture: Helping you every day!

FARM CAMP
—MINNESOTA—



Annual Report Contents.

Cover photo was shared by Kim Germscheid, K-4 STEM educator at Cleveland Public Schools. The students are grinding wheat into flour as part of The Little Red Hen lesson.

Welcome Annual Report 2023



Thank you for investing in the mission of **Increasing Agricultural Literacy through K-12 Education**. We hope you find the MAITC Annual Report inspiring and informative. If you have any questions, please reach out to our Executive Director, Ann Marie Ward. Without you, the investors, grantors, Board of Directors and entire team of MAITC, we would not have impacted over 161,000 students, sharing the facts, impact and opportunities within Minnesota agriculture.

Pictured Above: 2022 5th Grade Ag Day Farm Camp in Redwood County.

- 04 A Message from the Board Chair
- 05 A Message from the Executive Director
- 06 Organizational Structure
- 07 A Valued Partnership
- 08 Our Team
- 10 Programs & Resources
- 12 Program Highlights
- 14 Teacher Tours
- 16 Virtual Field Trips
- 18 AgMag
- 19 Farm Camp
- 20 Investors
- 22 Board of Directors
- 23 Financial Report

Message from the Board of Directors



Minnesota Agriculture in the Classroom, Inc. Foundation

Miles Kuschel
Board Chair

Howdy to all friends, funders, supporters, educators and ag enthusiasts,

The 2021-2022 year promised to be an exciting year for Minnesota Agriculture in the Classroom. We fully geared up for getting back in person with everything we do and then we immediately had to pivot and build on the exciting opportunities we were able to glean out of the Covid curriculum as it was extended into another school year. However, our Team is nothing short of phenomenal when it comes to adapting to a changing world and adapt we did. As restrictions loosened our team navigated the hybrid dynamics of varying school policies, education formats, and governmental restrictions with the fortitude of all the educators making brighter futures for our students during these challenging times. We built off the success of Farm & Food Book Week to host 4,434 students during the 2nd annual event. We hosted Virtual tours throughout the year, returned to hosting In-Person Tours and workshops, and had the chance to finally meet many of our supporters and donors in-person. We have been able to expand our

AgMag lineup by adding specific grade level issues for K-6 students twice a year, added technology to get our Regional Specialists out in the fields to interview and answer questions throughout Minnesota's diverse Agricultural Economy, and bring Students out to the farm through our Farm Camps. As we wrapped up the year we were able to host 4 in person teacher tours as well as 1 virtual tour really showcasing the state of Minnesota, some of the new lessons on the curriculum matrix and the virtual tour introducing our educators to how a Farm Camp works. The foundation team was excited to have members of our Minnesota Department of Agriculture partners joining us for these tours as well. There are many great things being planned for the coming year, so stay engaged and watch for what is to come. Our Foundation only works as well as it does through the funding you generously donate to the mission of "Agriculture for all!"

May the Mission be fulfilled;
Miles Kuschel, Board Chair



Minnesota Agriculture
in the Classroom
Foundation

Message from the Executive Director,

Ann Marie Ward annmarie@maitc.org

It is with great pride that I serve as the Executive Director of the Minnesota Agriculture in the Classroom, Inc. Foundation. A public/private partnership that allows us to leverage funds and the talents of the Minnesota Agriculture in the Classroom (MAITC) Team to increase agricultural literacy through K-12 education. Fundraising and sharing the meaningful work of the professional and passionate team that is MAITC is gratifying and challenging. Program year 2021-2022 resulted in 161,138 students being directly impacted. This is an increase of 18%, or close to 30,000 more students compared to the previous year, this is a testament to the exceptional efforts of the MAITC Team. And, how impactful an investment in MAITC is. The total number of gifts was up 37% and the total revenue increased over 21%, supporting the vision and increasing impact!



Grant funds and investors who believe in the vision: Agriculture is valued by all, make it possible to engage educators and students and offer new programming and grow existing program models.



The work of MAITC is diverse, as is the agriculture of Minnesota, there is so much to learn and share. In addition to the impactful professional development delivered, the team works to grow personal connections with educators and administrators, cultivating a stronger and larger network of educators who infuse agriculture into their classrooms consistently. Having had NO Pandemic Pause, this team engaged educators in innovative ways and continues to bring agricultural-based lessons (that meet state academic standards), activities and conversations into classrooms across the state. In addition,

MAITC brought educators and students to agricultural experiences that matter: virtual, in-person and hybrid experiences proved that well planned programming makes a difference. MAITC has an exceptional year ahead, with anticipated growth, as we engage educators across Minnesota in new ways, and the addition of an "Educator Driven Advisory Team", further engaging educators in program and resource review and design. Our focus is on educators of students grades K-12, enlightening and inspiring the future of agriculture.

Organizational Structure



The Minnesota Department of Agriculture is the lead for Minnesota Agriculture in the Classroom program development and implementation, while the Minnesota Agriculture in the Classroom, Inc. Foundation secures and manages private funds to support the overall program. Funds committed to the program from both sectors are leveraged many times over. This partnership has also allowed MAITC to offer educational materials for FREE since program inception in 1985.

The Minnesota Agriculture in the Classroom, Inc. Foundation began in 2007 to support the MAITC program. The foundation is led by a Board of Directors that represent agriculture and education communities. MAITC is a 501(c)3 not for profit charity. Funders are vital to providing free educational resources, grants and outreach to the state's K-12 community.

A Valued Partnership

For three decades, the public and private sectors have pooled human and financial resources to advance agricultural literacy among K-12 students and educators through the Minnesota Agriculture in the Classroom (MAITC) program. This unique public/private partnership model provides program consistency and credibility in Minnesota's agricultural and educational communities and is known for effectively leveraging resources from both sectors.



July 27, 2022

Dear supporters of the Minnesota Agriculture in the Classroom Foundation,

The Minnesota Department of Agriculture and the Minnesota Agriculture in the Classroom Foundation have a long and productive partnership that jointly funds, develops, and disseminates educational resources and programs related to agriculture, food, and natural resources. This public/private partnership is an extremely effective model for increasing ag literacy in Minnesota and Minnesota's program is recognized as a national leader. The framework for this relationship is spelled out in a detailed Memorandum of Understanding ("MOU") that lays out each organization's roles and responsibilities. This agreement is reviewed and refreshed every two years.

MDA's primary role is to provide two amazing Education Specialists (Sue Knott and Keri Sidle) who assist administrators, educators, ag advocates, and event facilitators with finding the right activities, curriculum, and people to meet their requirements. Keri and Sue lead workshops and help train educators and future educators on how to make the most of the FREE resources that Minnesota Ag in the Classroom offers. In addition to the education specialists and supporting investments in space, technology, training, travel, and a limited amount of program funds, the MDA also provides funding for a student worker who provides support for the program. These investments total more than \$250,000 per year.

The MDA's Minnesota Agriculture in the Classroom (MAITC) staff is consistently exploring opportunities to leverage the strong partnerships agricultural and educational organizations. The MDA MAITC staff partnered with the MAITC Foundation as well as the Minnesota Alliance for Geographic Education to submit a grant proposal to the National Geographic Society to host a three-day educator professional development event. The proposal was accepted, and grant funds were used to provide travel, food, lodging and stipends to 25 teachers. These participating teachers traveled to a variety of agricultural sites that specialize in producing products that are consumed locally including Gale Woods Farm and Schram Vineyard. Teachers also visited a crop farm and barge loading facility where agricultural commodities are produced, then transported and consumed all over the world. The strong collaborative efforts of the MAITC program, and partnering organizations, allowed for a truly impactful experience for educators. One participant, a veteran teacher, shared: "This was the most supportive, collaborative, community oriented and affirming professional development I have ever experienced."

On behalf of the MDA, I want to thank Minnesota Agriculture in the Classroom Foundation supporters, board members, and staff for their dedication and collaboration. We look forward to being your partner for many years to come!

Sincerely,

Paul Huginin

Director, Ag Marketing and Development Division

In accordance with the Americans with Disabilities Act, this information is available in alternative forms of communication upon request by calling 651-201-6000. TTY users can call the Minnesota Relay Service at 711. The MDA is an equal opportunity employer and provider.



Our **Team** **mn** DEPARTMENT OF AGRICULTURE
is comprised of both state and foundation staff.

State staff includes two Education Specialists. Foundation team members include three Regional Curriculum Specialists, a Farm Camp Program Director and the Foundation Executive Director as contracted team members.



Keri Sidle
 Education Specialist
 MDA
 keri.sidle@state.mn.us



Sue Knott
 Education Specialist
 MDA
 sue.knott@state.mn.us



Jessica Blosberg
 Regional Curriculum Specialist
 jessica@maitc.org



Sarah Kuschel
 Regional Curriculum Specialist
 sarah@maitc.org



Emily Ponwith
 Regional Curriculum Specialist
 emily@maitc.org



Ann Vote
 Farm Camp
 Program Director
 director@farmcampminnesota.org



Ann Marie Ward
 Foundation Executive
 Director
 annmarie@maitc.org

Sarah Kuschel Wins 2022 Minnesota Farm Bureau Federation (MFBF) Golden Apple Award



Sarah Kuschel, Recipient of the MN Farm Bureau Golden Apple Award, is pictured with Linda Binkley, of Beltrami County, recipient of the MN Farm Bureau AgVocate Award.

The Golden Apple Award is presented to someone

who has gone above and beyond to work with Agriculture in the Classroom programs and educate others about farming and ranching. Annually, the MFBF hosts the LEAP Conference (Leadership, Education, Advocacy and Promotion) and awards four leaders with awards for their efforts over the past year.



Emily Ponwith Finalist for 2022 Farmfest Woman Farmer of the Year

Emily Ponwith Nominated for 2022 Farmfest Woman Farmer of the Year

The Farmfest Woman Farmer of the Year Award honors the

hard-working female farmers all across Minnesota who selflessly give their time to growing the crops and raising the livestock needed to feed the world. So many times, women on the farm wear multiple hats, tirelessly contributing to the farm but also participating in community, raising children or working outside the home. And for that commitment, we want to say thank you.

Regional Curriculum Specialists & The Work They Do

The Minnesota Ag in the Classroom Regional Curriculum Specialists build relationships with schools across the state and connect them to free, standards-based resources and programs. During the 2021-2022 year, this team consisted of the following specialists:

- Sarah Kuschel
- Emily Ponwith
- Jessica Blosberg

In addition to their day to day work, each Regional Specialist also plans and leads a Teacher Tour every summer!

Resources Reaching Every County in Minnesota

The Minnesota Agriculture in the Classroom team works hard to ensure that educators in every county throughout the state of Minnesota have access to free resources. With a team that covers the entire state and works directly with schools, we are proud to say that every county in Minnesota has at least one school utilizing MAITC Resources.



Programs & Resources

The Minnesota Agriculture in the Classroom program (MAITC) seeks to improve student achievement by applying authentic, agricultural based content as the context to teach core curriculum concepts in science, social studies, language arts and nutrition. By encouraging teachers to embed agriculture into their classroom and curriculum, MAITC cultivates an understanding and appreciation of the food, fiber and fuel system that we all rely on every day.



An average of 293 website sessions a day across all MAITC sites (MN.agclassroom.org, farmcampminnesota.org an mnmag.org).

*A website session is the period of time a user is actively engaged with your website, app, etc.



Curriculum Resources

Curriculum Matrix - searchable database of over 500 lesson plans and resources.



K-12 Educator Opportunities

Workshops and Webinars, Summer Teacher Tours, MAITC Foundation Outstanding Teacher Award, Agricultural Literacy Grants.

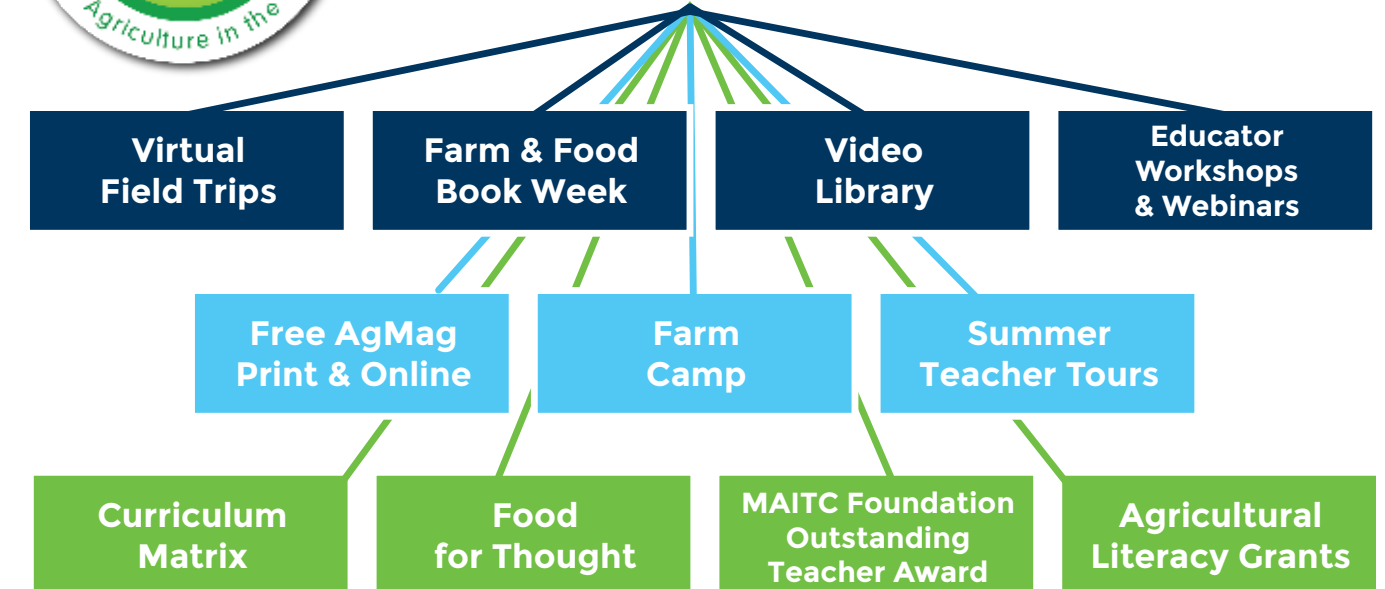


Student Engagement

Virtual Field Trips, Video Library, Free educational resources. AgMag Series, Farm Camp Minnesota



PROGRAMS & RESOURCES



MN Ag in the Classroom on Social!



Likes & Followers
2958 in 2021 | 3182 in 2022



Followers
649 in 2021 | 922 in 2022



Program Highlights Highlights

Students Impacted **4,434**

2022 Readers **11**

FARM AND FOOD BOOK WEEK

GUEST READER
DALVIN TOMLINSON

February 15 at 10 a.m. CST
Book: Who Made my Lunch Series: From Milk to Cheese by Bridget Heos.

The 2nd Annual Farm and Food Book Week was hosted during the week of February 14-18, 2022.

Classrooms joined from across the state on Zoom for virtual agriculture-themed book readings by special guest readers.

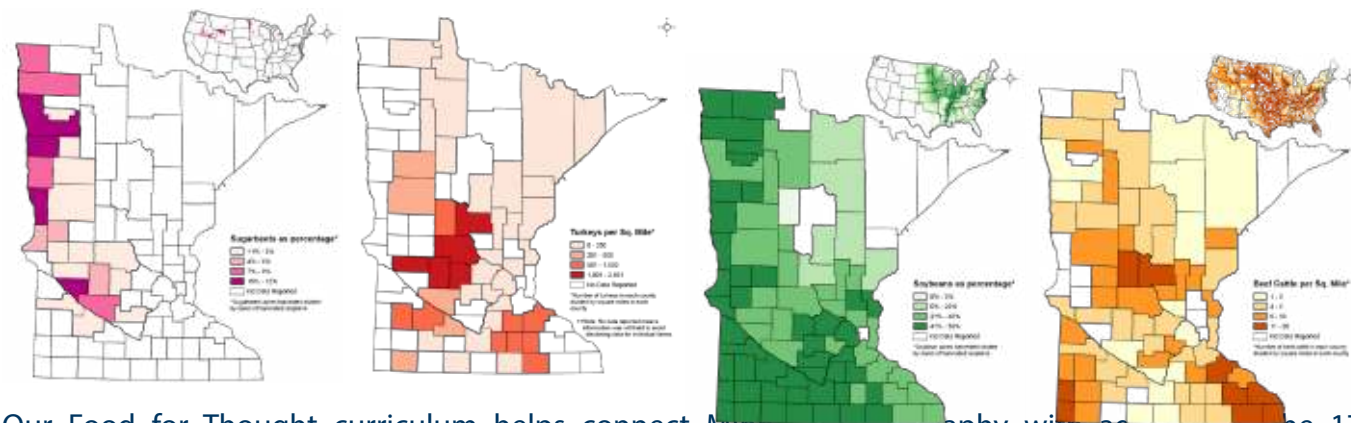


FFA Agriculture Literacy Award sponsored by MAITC. The Staples Motley Team reached 5,231 people through their agricultural literacy efforts.

Ag Literacy Grant

Minnesota Agriculture in the Classroom offered grant awards to ten K-12 educators to encourage them to bring agriculture and food systems education “to life” by effectively integrating related content into their classroom or school. This year’s grant recipients included projects such as Read to Grow, Farm Camp “Field Day” Tour, The Hands-On Animal Science Experience, Hydroponic Middle School, Honey Bees, Kindergarten Dairy Farm Field Trip, Where Food Comes From, Exploring Ag with 4-H Afterschool and Raising Chickens at School.

Food for Thought



Our Food for Thought curriculum helps connect Minnesota geography with agriculture. The 17 standards-based lessons, 42 static maps and additional interactive map layers are designed to engage K-12 students and inspire interest in the geography of Minnesota agriculture.

MAITC Outstanding Teacher Award



Tiffany Kobbermann, a seventh through twelfth grade family and consumer science teacher at Minnewaska high School in Glenwood, MN, uses agriculture in every lesson with her students to provide a well-rounded perspective of agriculture. Tiffany was recognized with a National Award of Excellence for Teaching about Agriculture from the National Agriculture in the Classroom Organization in New York, June 2022.



Summer Teacher Tours

Unique professional development opportunities are what our Summer Teacher tour participants experienced. These tours allow educators to observe and experience current agricultural production, processing and distribution techniques as well as gain exposure to a wealth of standards-based agricultural themed lesson plans and resources.

There were five summer teacher tours to choose from this year helping over 88 educators connect with agriculture including a unique partnership with the National Geographic Society!



Cows, Creamery and Cooperage Park Rapids, MN July 12

This tour featured unique family owned and operated stops and lunch from a local favorite that prides themselves on handcrafting fresh foods to make people feel good. Tour stops included Ten Finns Dairy, a fifth generation Finnish dairy farm in northern Minnesota that exclusively breeds Minnesota's first A2 herd. In addition to Ten Finns Dairy, stops also included Black Swan Cooperage, a father daughter team located in the heart of the Northwoods creating barrels in a variety of sizes and shipped worldwide.



High Tech Farming St. Peter, MN July 20

Farmers are experts at stepping up to the plate to embrace new advancements in technology in the name of producing quality food, fiber and fuel for the world. This tour highlighted many of the ways in which Minnesota farmers utilize technology to improve efficiency and sustainability for their farming practices. Stops included Forest-Lawn Holsteins where educators learned about robotic milking and also explored biotechnology, electronic and data tracking technology and also had the opportunity to fly a drone!



From Field to French Fry Virtual July 26

RD Offutt Farms grows potatoes on thousands of acres in Minnesota and they gave a behind the scenes look at the journey a potato takes going from field to french fry during our virtual Teacher Tour modeling a Farm Camp Minnesota experience! Educators heard from a grower and agronomist that help in the fields, were able to look inside a potato storage facility, watched a chemist in the french fry lab analyze potatoes for consumption and viewed the process potatoes go through at Lamb Weston RDO to become delicious french fries.



Agriculture: Local to Global Waconia, MN June 21-25

This three day tour investigated both local and global agriculture and food systems and included edible classroom and produce farm tours, local vineyard and winery tour, corn and soybean farm tour, grain terminal and barge loading terminal tour and a tour of the Anderson Historic Farm. In partnership with the Minnesota Alliance for Geographic Education and the National Geographic Society, educators were able to apply to attend and receive a stipend for attending this year along with lodging and meals.

Twin Cities St. Paul/Minneapolis July 28

Educators toured Pearson's Candy Company, a Minnesota grocery store and Minnesota Farmers Union Farmer's Kitchen + Bar while getting a behind-the-scenes look at making Minnesota's favorites like Nut Goodies and Nut Rolls! At the grocery store, participants discovered the logistics of getting food to consumers and the challenges they face. At Farmer's Kitchen + Bar participants shared ideas of how to bring lessons about agriculture, environmental science and local treats into their classrooms while enjoying a delicious lunch.



Virtual Field Trips



Virtual Field Trips brought students to agriculture across Minnesota without having students leave the classroom! In the 2021-2022 school year, over 14,700 students viewed a Virtual Field Trip!



Virtual Field Trip to Backlund Acres

October 2021

<https://youtu.be/l7EBq6fF9Po>

Students met chickens, pigs, cows and learned about how microgreens are grown at Backlund Acres! Sheila Backlund believes that healthy soil brings healthy animals which turn into healthy people!

Virtual Field Trip to Ponwith Farms

October 2021

<https://youtu.be/JJATwFXAg6Y>

Students rode along in the combine as Ponwith Farms harvested field corn! They explored the common uses of field corn, learned more about technology used in agriculture and were able to get a close up tour of the combine used during the harvest.



Virtual Q&A with Square Deal Dairy

October 2021

<https://youtu.be/sFQjZ7Ndn74>

Have your students been to a dairy farm? Here's your chance to watch Fuel Up to Play 60 Player Ambassador, Dalvin Tomlinson, from the Minnesota Vikings, as he goes on his first dairy farm tour at Square Deal Dairy with the Otte family!

Virtual Field Trip to Turkey Farm

November 2021

<https://youtu.be/1fSwkrMK0nA>

Students met Smanatha Gessell and saw what a day in the life of a turkey farmer is like! Our farmers just received poults (baby turkeys) so students were able to see them up close and ask questions about how turkey farmers care for their birds! This 30 minute virtual field trip is targeted for K-5 students.



Virtual Field Trip to Len Busch Roses

January 2022

https://youtu.be/QLer_Is5uRY

Len Busch Roses is a Minnesota grower of fresh cut flowers and blooming plants. Flowers from Len Busch can be found in local Target stores as well as other supermarkets in the area. On this virtual field trip, students learned the basic anatomy of a tulip, the tulip life cycle and took a closer look at machines that harvest and complete necessary tasks. Tour guide, Scot Ferguson, lead the field trip through the greenhouse and pointed out the amazing and educational things along the way.



Virtual Field Trip to Bongards Creamery

February 2022

<https://youtu.be/4Z59vH1LCDw>

Have you ever wondered how all that milk is made into the cheese we enjoy? Students learned about the process of turning milk into cheese with a virtual field trip of Bongards, a Minnesota-based farmer-owned cooperative that has been crafting premium dairy products for over 110 years.



Virtual Field Trip to Tashjian Bee and Pollinator Discovery Center

February 2022

<https://youtu.be/SLAJTjwM7s>

Bees and other pollinators are essential for plant, animal and human health around the world. On this virtual field trip we visited Ping Honzay at the Tashjian Bee and Pollinator Discovery Center in Chanhassen, Minnesota. Students learned about the life cycle, habitat, how to care for and importance of pollinators in agriculture and the natural world.

Virtual Field Trip to Rocking K Ranch

April 2022

<https://youtu.be/-ZyRhgoTOVg>

Students explored Rockin K Ranch in Nimrod, Minnesota. Miles & Sarah Kuschel hosted students virtually on their generational ranch where rotational grazing is utilized to ensure forage for the herd throughout the grazing season.



Teacher Professional Development and Outreach

Customized workshops provide opportunities to gain resources and ideas for embedding authentic agricultural examples within science, social studies, math, language arts and health/nutrition curricula.

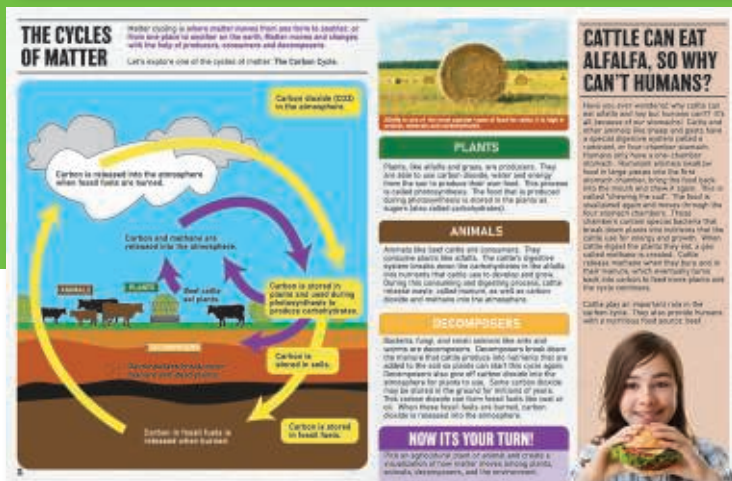
Pre-service - 322 teachers

In-service - 308 teachers



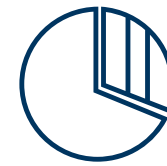
AgMag is Celebrating 35 Years!

The AgMag is a flagship resource of Minnesota Agriculture in the Classroom. With the first edition publishing in 1986, the AgMag has grown into a resource that is custom made for each grade level. Each edition contains standards-based curriculum at the center of the stories and interactive features. This popular resource is available FREE to educators and ag advocates across Minnesota.



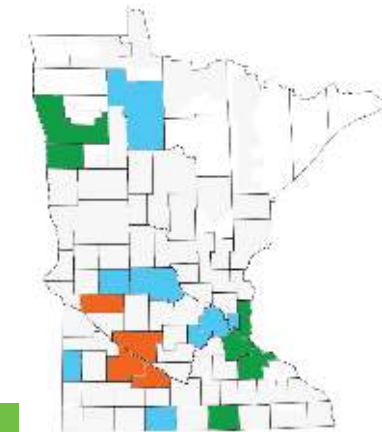
FARM CAMP - MINNESOTA

Farm Camp is a three day immersive agriculture experience customized for your classroom bringing 5-12 grade learners to the farm.



2021-2022 Impact

958 Students
56 Classrooms
46 Educators
20 AgHosts



2021-2022 FARM CAMP EXPERIENCES BY COUNTY

Green: Ag-Host County of Origin
Blue: Educator County Origin
Orange: County with both Ag-Host and Educator Origins



“[The students] loved the experience of meeting the chicks, learning about chickens and pigs as well as the maple syrup. Thank you so much for this opportunity and connection. I would love to plan another tour for next year!” ~ High School Educator, Gordon Parks High School, St. Paul, MN



“Thank you so much for a great day on the farms! This was the best AG day I’ve attended. The stations were so engaging, and we loved all of the hands-on activities. I was very impressed by how much the kids had learned. In the afternoon, they were able to answer many questions from farmers that they wouldn’t have been able to before the morning with the stations. You did a terrific job of organizing and planning. Looking forward to next year!” ~ 5th Grade Teacher, Redwood Area Middle School, Redwood Falls, MN



“It was a perfect day! I wouldn’t change a thing!” ~ 5th Grade Teacher, Renville County West, Renville, MN



Investors



35+ Years

Compeer Financial
Minnesota Beef Research and
Promotion Council

30+ Years

Minnesota Soybean Research &
Promotion Council
Minnesota Pork Board
Minnesota Livestock Breeders Assn.
Midwest Dairy Association
Minnesota Farm Bureau Foundation
Minnesota Corn Growers Association
Minnesota Turkey Research & Prom.
Council
Minnesota Wheat Research & Prom.
Council
Minnesota Grain and Feed
Association
Minnesota Assn of Agricultural
Educators
The Rosen Family Foundation

25+ Years

Red River Valley Sugarbeet Education
Foundation
James Ertl
Midwest Food Products Association

20+ Years

Jennie-O Turkey Store
Minn-Dak Farmers Cooperative
Southern Minnesota Beat Sugar Coop.

15+ Years

Minnesota AgriGrowth Council
Minnesota Agri Growth Council
Steele-Waseca Cooperative Electric
Minnesota Area II Potato Res. & Prom.
Council
AgCountry Farm Credit Services

10+ Years

Lac Qui Parle County Farm Bureau
Minnesota CattleWomen

5+ Years

Yellow Medicine Co Farm Bureau
Yellow Medicine Co Corn Growers
Walter Munsterman
CoBank
SE Grains & Feed Dealers
David & Bonnie Mathiowetz
Joel Mathiowetz
Ed Frederick
Mary Larson
Carver County Farm Bureau
Minnesota Agricultural Education
Leadership Council
Randy Mathiowetz
Christensen Farms
Kari Schwab
MN Agri-Women
Sarah & Dallas Dornink
Vernon Cardwell
Paul & Val Aarsvold
Dakota County Farm Bureau
Renville Cty Corn & Soybean Growers
Association
McPherson Crop Management
National Agriculture in the Classroom
Organization

1-4 Years

Richard & Linda Hagen
Sue Knott
Absolute Energy LLC
New Fashion Pork
Vicky & Scott Singlestad
Ahanna & Kyle Compart
Miles & Sarah Kuschel
Redwood Area Cattlemen
Martin County Pork Producers
Greta Tank
Lisa Hoefs

Mark & Mary Davis Foundation
Roger & Joanne Dale
Riverview LLP
Keri Sidle
Ann Marie Ward
NuWay - K&H Cooperative
Fairmont Veterinary Clinic
Glen and Kelsey Schmidt
Redwood Area Chamber Ag Committee
Mcleod Cty Corn & Soybean Growers
Katie & Kevin Davis
Jennifer Wagner-Lahr
Agri Bank
Bayer Crop Science
Erica & Eric Sawatzke
Vote Family
Anderson & Moeller LLC
CHS Foundation's Educating Next
Generation Agricultural Leader Grant/
NAITC
Lori Cox
Pam Debele
Peter Bakken
Scott & Jean Winslow
Tom Walsh
Emily & Ryan Ponwith
Paul Hugunin
Sarah Kuechle
Katie Drewitz
Tiffany Kortbein
Jessica Blosberg
Haley Ammann-Ekstrom
Andrea Anderson
Mindy Woitas
Jenna Davis



Minnesota Agriculture
in the Classroom
Foundation

Meet the Board of Directors

Minnesota Agriculture
in the Classroom
Foundation, Inc. is led by
Executive Director, **Ann
Marie Ward**, under the
direction of a Board of
Directors.



Andi Anderson,
Three Rivers Parks-
Gale Woods Farm,
Delano



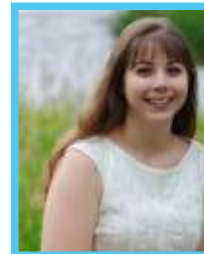
Sarah Kuechle,
Watkins School
Board/Midwest
Dairy B, Eden
Valley



Miles Kuschel,
Chair, MN Farm
Bureau, Sebeka



**Tiffany
Kortbein**,
Greenvale Park
Elementary,
Northfield



Katie Drewitz,
U of MN
Extension, St.
Cloud



Tom Walsh, Vice
Chair, Riverview
Dairy, DeGraff



Scott Winslow,
MN Corn
Growers
Association,
Fountain



Lori Cox,
Roots Return
Heritage Farm
LLC, Carver



Jenna Davis,
Secretary/
Treasurer,
Midwest Dairy
Association,
Cokato



**Haley Ammann-
Ekstrom**,
NuWay-K&H
Cooperative,
Welcome



Paul Hugunin,
Ex-Officio
Ag Marketing &
Development
Minnesota
Department of
Agriculture, St.
Paul



Ahnna Compart,
Past Chair, Compeer,
Nicollet



Katie Davis,
Ag Advocate,
Cokato



Kari Schwab,
Ex-Officio MN
Agricultural
Education
Leadership
Council, St. Paul



**Jen Wagner-
Lahr**,
AURI, Cold
Spring



Glen Schmidt,
Farmers Union,
St. Paul



**Ann Marie
Ward**, Executive
Director, Minnesota
Agriculture In the
Classroom, Inc.
Foundation, Bemidji



Minnesota Agriculture
in the Classroom
Foundation

Financial Report



Minnesota Agriculture in the Classroom, Inc. Foundation has merged with Farm Camp.

5:56 PM

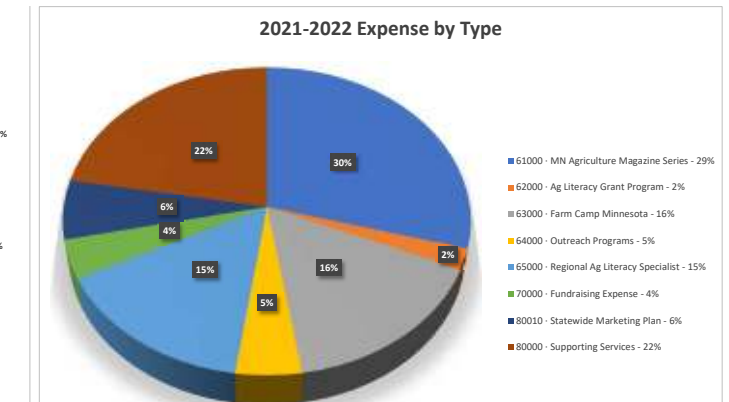
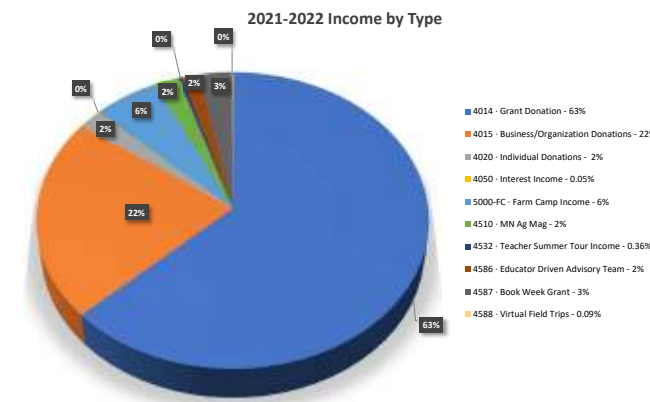
07/28/22

Accrual Basis

Minnesota Agriculture in the Classroom Foundation

Balance Sheet
As of June 30, 2022

	Jun 30, 22	Jun 30, 21	% Change
ASSETS			
Current Assets			
Checking/Savings			
1100-MA · MAITC Bank Accounts			
1101 · Checking-Bremer Bank 2974	10,501.73	7,558.03	39.0%
1103 · Savings-Bremer 8146	116,597.75	69,856.90	66.9%
1105 · Savings - Nat Geo Grant 2263	37,363.68	37,361.79	0.0%
Total 1100-MA · MAITC Bank Accounts	164,463.16	114,776.72	43.3%
1200-FC · FC Bank Accounts			
1201 · MAITC/FC Checking x904	0.00	3,854.03	-100.0%
1202 · MAITC/FC Savings x145	0.00	21,316.01	-100.0%
Total 1200-FC · FC Bank Accounts	0.00	25,170.04	-100.0%
Total Checking/Savings	164,463.16	139,946.76	17.5%
Other Current Assets			
1450 · Due From Nat Geo Grant	19,742.14	0.00	100.0%
Total Other Current Assets	19,742.14	0.00	100.0%
Total Current Assets	184,205.30	139,946.76	31.6%
TOTAL ASSETS	184,205.30	139,946.76	31.6%
LIABILITIES & EQUITY			
Equity			
3001 · Unrestricted Equity	7,977.01	7,977.01	0.0%
3002 · Restricted Equity	42,864.76	42,864.76	0.0%
3900 · Retained Earnings	89,104.99	13,616.80	554.4%
Net Income	44,258.54	75,488.19	-41.4%
Total Equity	184,205.30	139,946.76	31.6%
TOTAL LIABILITIES & EQUITY	184,205.30	139,946.76	31.6%





Agriculture is valued by ALL.

Increasing Agricultural Literacy through K-12 Education



Minnesota Agriculture in the
Classroom, Inc. Foundation
Ann Marie Ward, Executive Director
PO Box 987
Bemidji, MN 56619



mn.agclassroom.org
mnmag.org
farmcampminnesota.org



annmarie@maitc.org



218-556-1436